

Sustaining Pork Production Questions for Collaboration



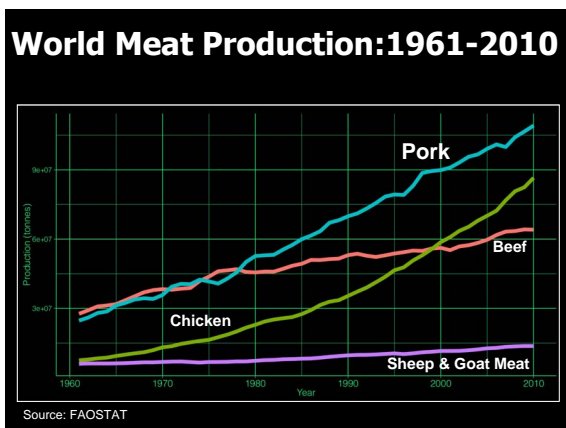
Mindi Schneider, PhD
International Institute of Social Studies (ISS)
University of Erasmus
The Hague, Netherlands

China & World 2012 Pork Figures

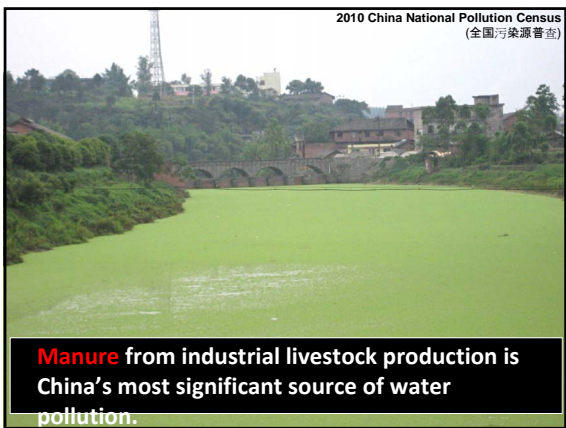
Source: USDA

	China	World	China as % of Total
Pork Production (1,000 MT)	51,400	104,363	49%
Pork Consumption (1,000 MT)	51,940	103,791	50%
Pork Imports (1,000 MT)	775	6,749	11%
Pork Exports (1,000 MT)	215	7,237	3%
Swine Production (1,000 head)	684,000	1,229,260	56%

*China produces less than 10% of the world's beef and 17% of the world's chicken.



What are the Impacts?





Smallholder farmers are leaving pork production.

- 2008: number of rural households that raise pigs declined by 50%.
- In some poor regions, only 35% of households raise pigs.
- Loss of indigenous pig breeds, agroecological knowledge, livelihoods, market opportunities.

Public health impacts include diet-related diseases, antibiotic resistance, food safety issues.



The Need for Feed



- **2011-12:** China imported 64% of total global soy trade.
- **2010:** China imported 9% of world agricultural trade.

IMPACTS:

- Greenhouse gas emissions ↑
- Land conversion for feed ↑
- China's "going out" for land ↑
- Global food security ?

Questions about the Model

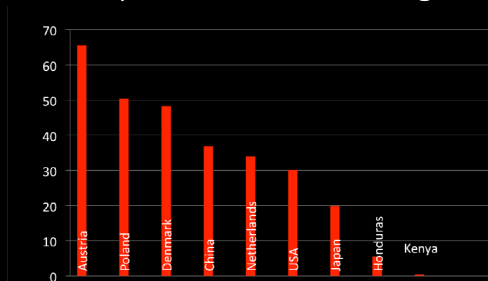
- Given the inherent challenges of industrial livestock production systems – *in China and the EU...*
 - Should research and funds be focused solely on improving the industrial system?
 - Or should research and funds also examine multiple forms & scales of production?
- What other models exist that offer sustainable solutions?

Questions about Pork Consumption



- Is pork demand in China insatiable? Global pork demand?
- Can the world's agroecosystems, resources, and climate support ceaseless growth in industrial pork (meat) production?

- In 2009, average per capita pork consumption in **China** was **36.8 kg**.



- World avg=15.8 kg :: EU avg=34.20 kg.

Source: FAO

Development Questions

- How to balance global food security needs with rising meat consumption in China (and elsewhere), and steady meat consumption in the EU (and elsewhere)?
- How can development be structured in a way that assumes limits to pork (meat) production and consumption, and how are those limits determined?

Potential Solutions & Research Topics

- Diversify
 - Scales of production
 - Forms of production
 - Feed types and sources
 - Genetics
- What opportunities emerge from diversity?
- What are the mutual benefits of such diversity for China, EU, globally?

Challenges

- Tendency to approach issues as *China's problems*, instead of as *systemic problems*.
- Lack of institutional mechanisms for governing *global* issues.
- Reluctance to support small- and mid-scale agriculture.
- Belief that industrial livestock production is inevitable.
- Reluctance to plan assuming limits.